

Eva Kunda Neidek

I

# The Word

Solo  
SAB

*The Life-Light* © 2019

Lead  
SAB

# The Word

John 1

Eva Kunda Neidek

## INTRO

Instr.

The piano introduction consists of two systems of four measures each. The key signature is three flats (B-flat, E-flat, A-flat). The first system has a first ending bracket over the final measure. The second system has a first ending bracket over the final measure, with the instruction 'Pattern continues to 40' written below it.

Chord progressions: G $\flat$ , G $\flat$ /B $\flat$ , C $\flat$ , D $\flat$

2.

## A SOP

9 D $\flat$  G $\flat$  G $\flat$ /B $\flat$  C $\flat$

The Word \_\_\_\_\_

13 D $\flat$  G $\flat$  G $\flat$ /B $\flat$  C $\flat$

— was first. \_\_\_\_\_

## B SOP + ALTO

17 D $\flat$  G $\flat$  G $\flat$ /B $\flat$  C $\flat$

— The Word, \_\_\_\_\_

21 D $\flat$

the Word was

## LEAD

22 D $\flat$

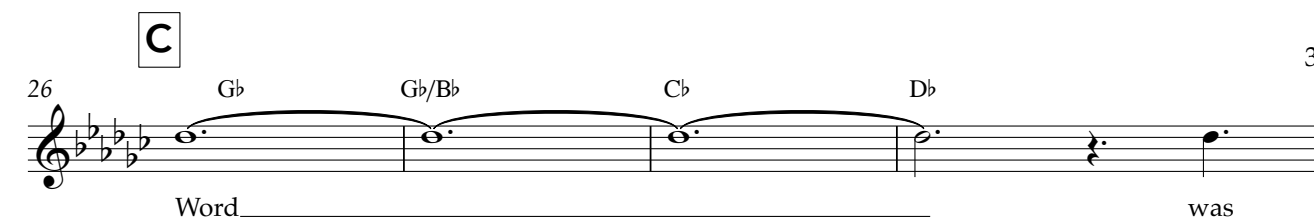
G $\flat$  G $\flat$ /B $\flat$  C $\flat$  The

first, \_\_\_\_\_ the Word \_\_\_\_\_ was first.

**C**

26

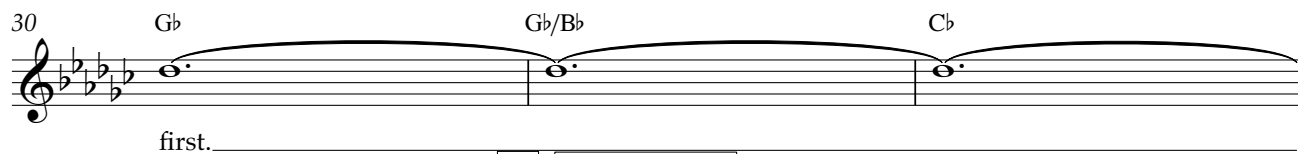
G $\flat$  G $\flat$ /B $\flat$  C $\flat$  D $\flat$



Word \_\_\_\_\_ was

30

G $\flat$  G $\flat$ /B $\flat$  C $\flat$

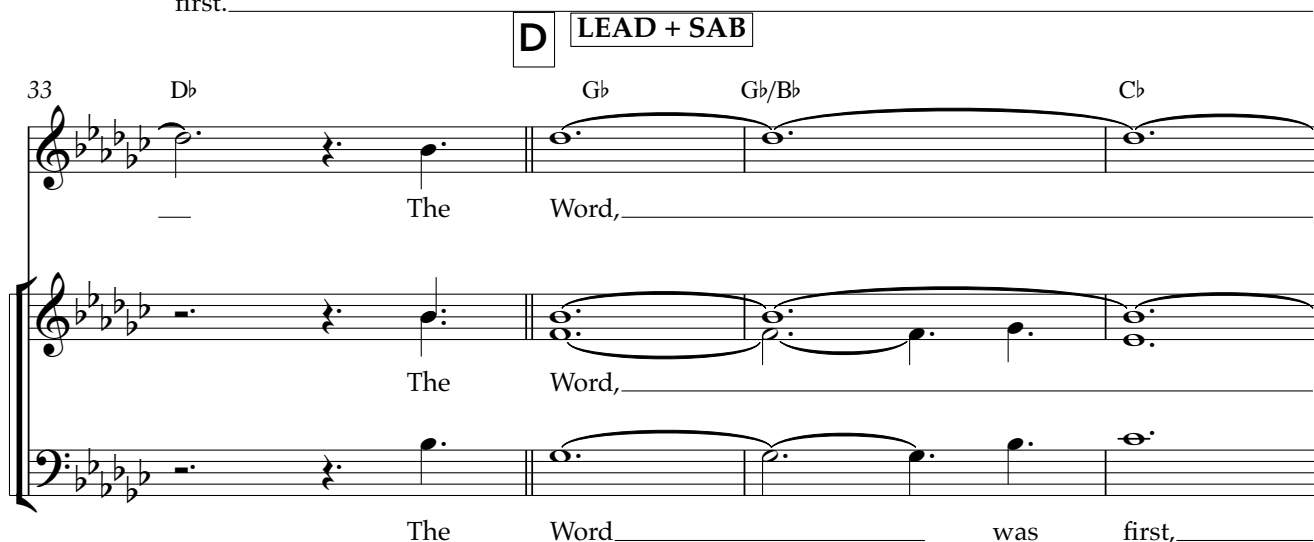


first. \_\_\_\_\_

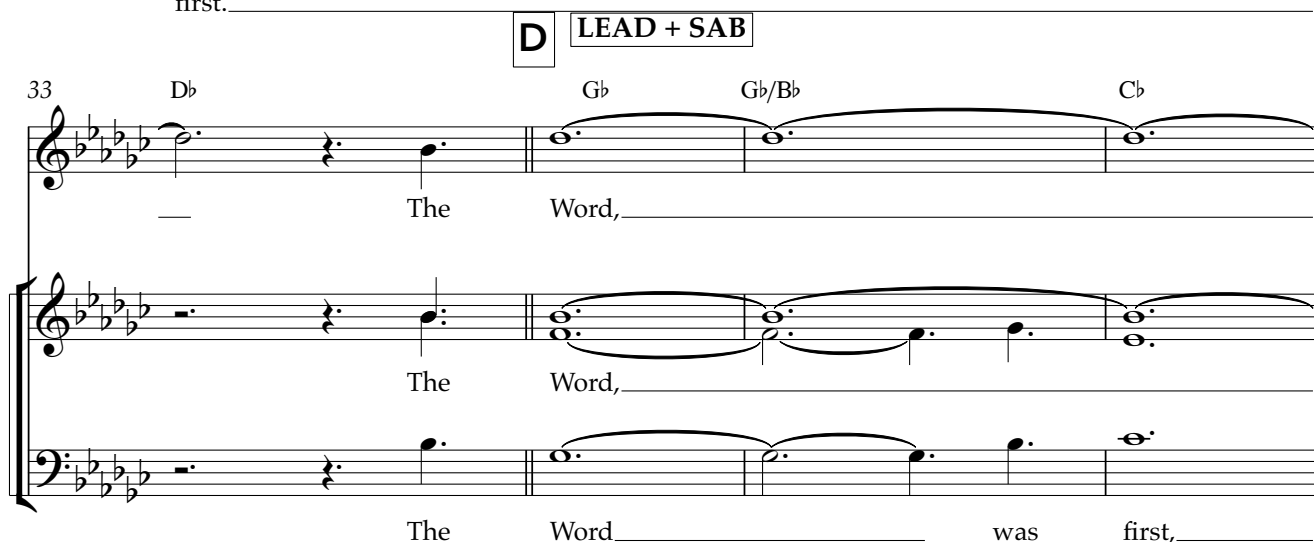
**D LEAD + SAB**

33

D $\flat$  G $\flat$  G $\flat$ /B $\flat$  C $\flat$



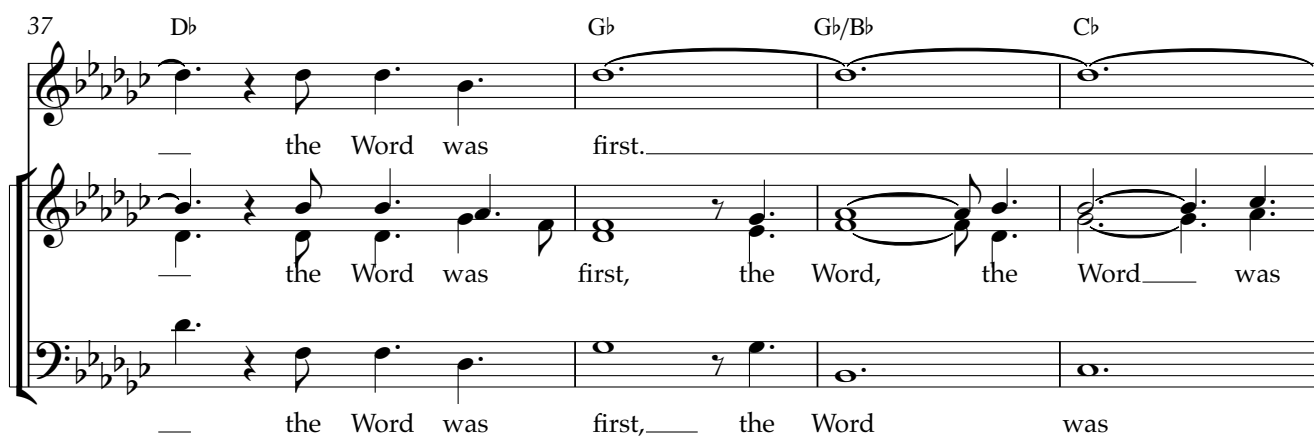
\_\_\_\_\_ The Word, \_\_\_\_\_



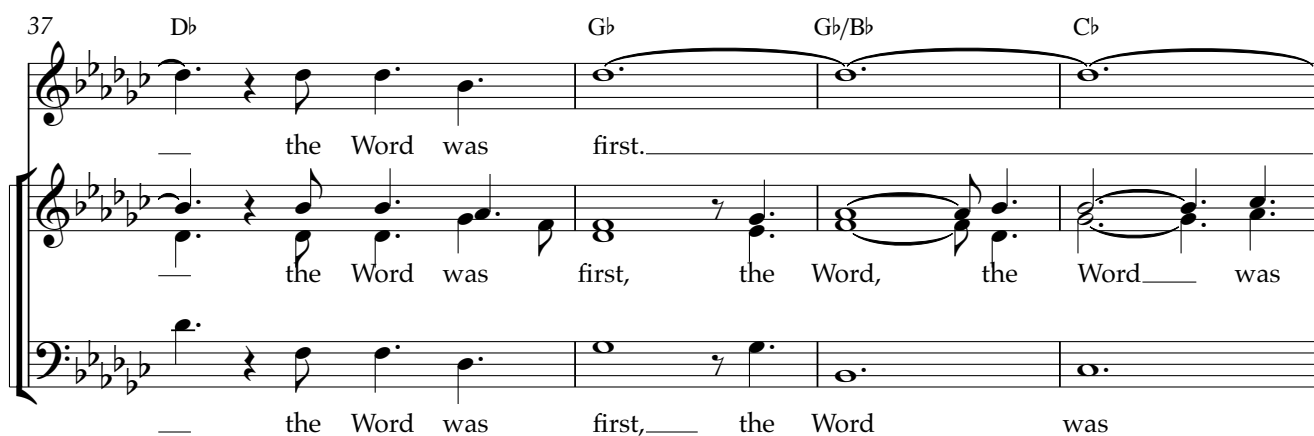
The Word \_\_\_\_\_ was first, \_\_\_\_\_

37

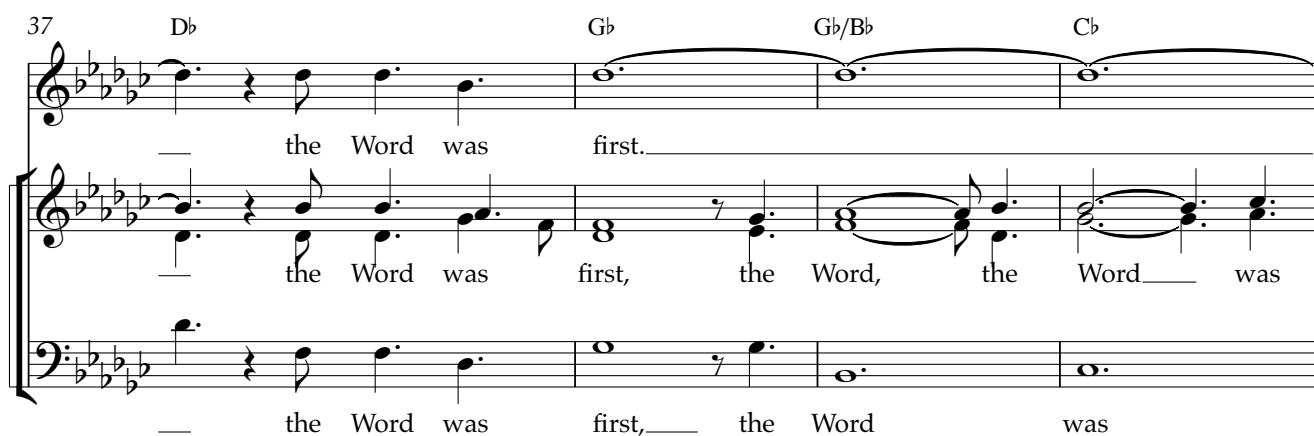
D $\flat$  G $\flat$  G $\flat$ /B $\flat$  C $\flat$



\_\_\_\_\_ the Word was first. \_\_\_\_\_



the Word was first, the Word, the Word \_\_\_\_\_ was

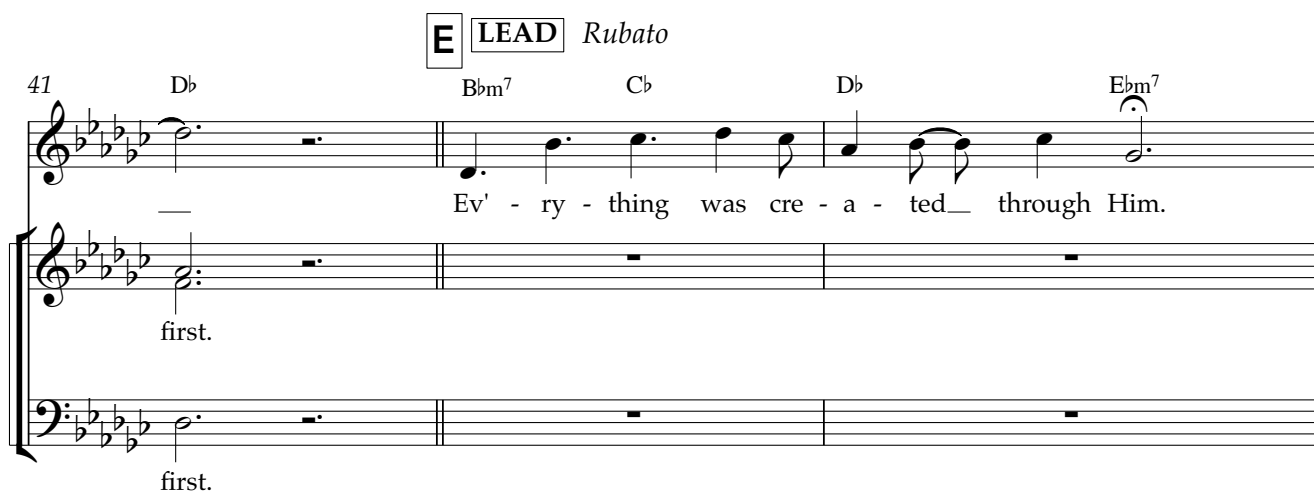


\_\_\_\_\_ the Word was first, \_\_\_\_\_ the Word was

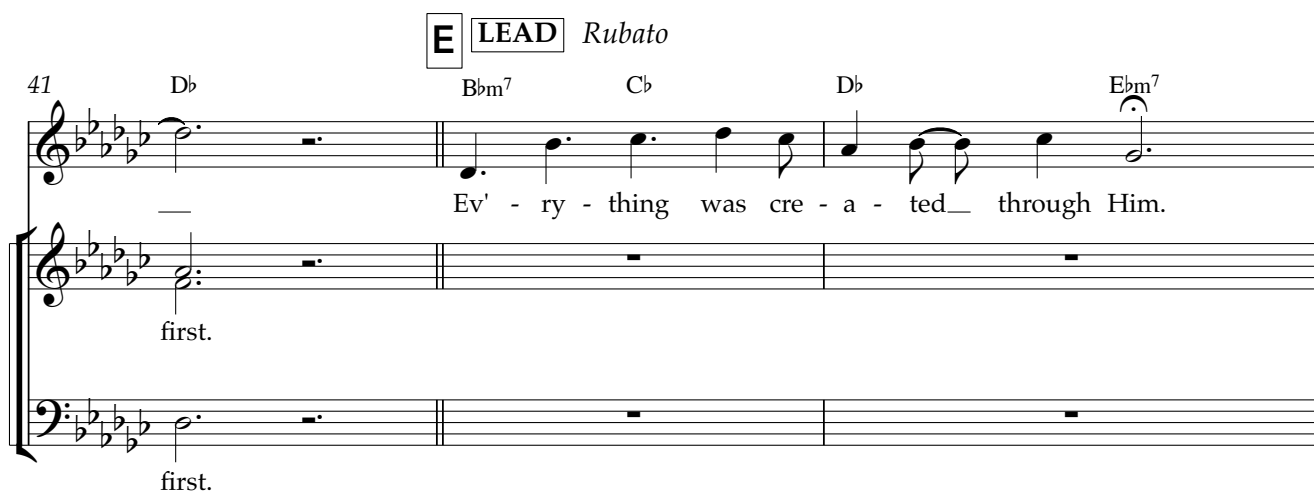
**E LEAD Rubato**

41

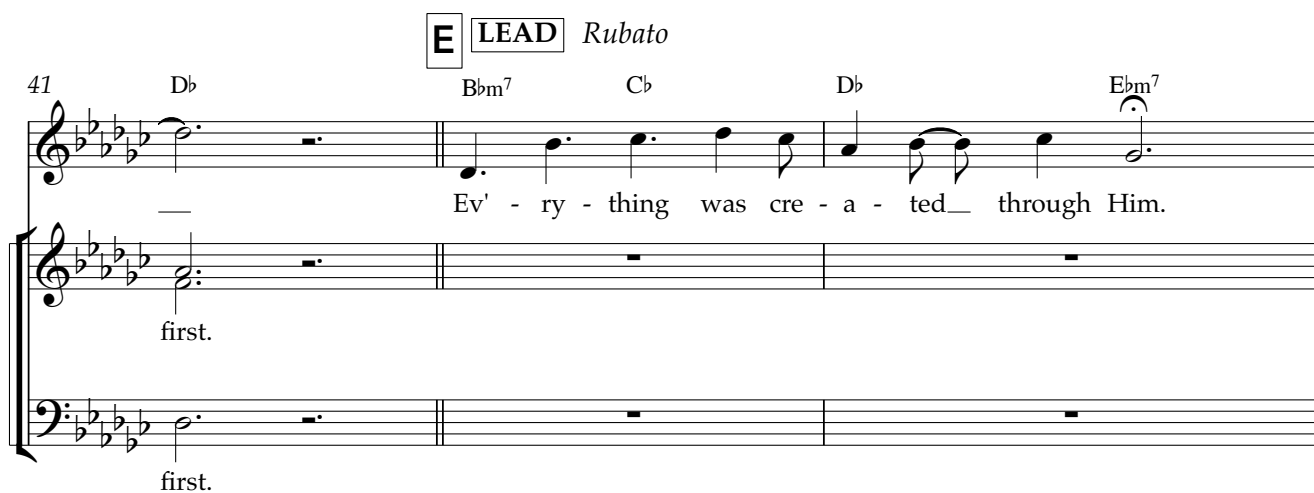
D $\flat$  B $\flat$ m $^7$  C $\flat$  D $\flat$  E $\flat$ m $^7$



Ev' - ry - thing was cre - a - ted \_\_\_\_\_ through Him.



first.



first.

**+ SAB**

44 *G♭/F♭ A♭m/F♭ G♭/F♭ A♭m/F♭ G♭/F♭ E♭m<sup>7</sup>*

Not - hing, not one thing, not - hing, not one

Not - hing, not one thing, not - hing, not one

Not - hing, not one thing, not - hing, not one

46 *A♭m<sup>7</sup> A tempo D♭<sup>11</sup>*

thing came in - to be - ing wit - hout

thing came in - to be - ing wit - hout

thing came in - to be - ing wit - hout

**F** *Back to pattern*

48 *G♭ G♭/B♭ C♭*

Him. The Word, the Word was

Him. The Word, the Word was

Him. The Word, the Word was

52 *G♭ G♭/B♭ C♭ D♭*

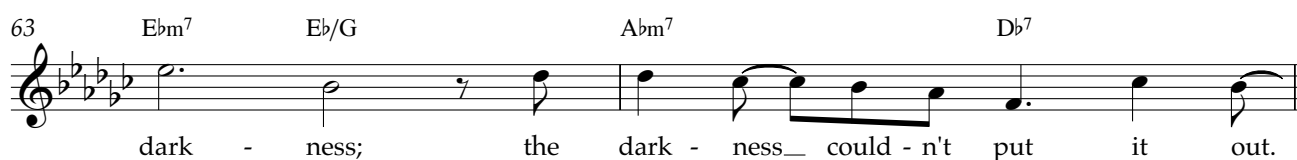
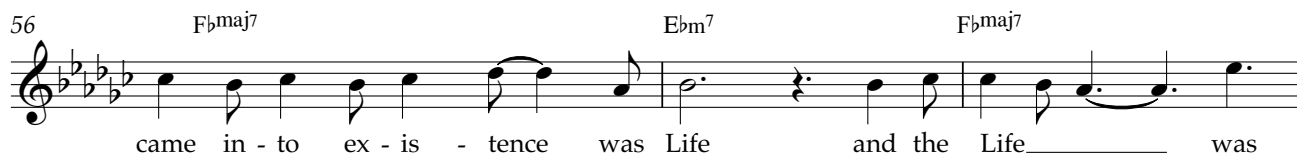
first, the Word was first. What

first, the Word was first.

first, the Word was first.

**G** **LEAD** *Rubato*

5



**H** *Back to pattern - tempo*

65  $G\flat$   $G\flat/B\flat$   $C\flat$   $D\flat$  **SAB**

The Word was

The Word was

69  $G\flat$   $G\flat/B\flat$   $C\flat$   $D\flat$

first, \_\_\_\_\_ the Word \_\_\_\_\_ was first. What

first, \_\_\_\_\_ the Word was first.

6 73 **I** F $\flat$ maj7 Ebm7 F $\flat$ maj7 Ebm7

came in - to e - xis - tence was Life, and the Life was Light,\_\_\_

77 F $\flat$ maj7 Ebm7 F $\flat$ maj7

Light to live by,\_\_\_ and the Life-Light blazed out of the  
Light to live by,\_\_\_ and the Life-Light blazed out of the

80 Ebm7 Eb/G Abm7 Db7

dark - ness; the dark - ness could - n't put it out..  
dark - ness; the dark - ness could - n't put it

**J** Back to pattern - tempo

82 G $\flat$  G $\flat$ /B $\flat$  C $\flat$  D $\flat$

out. The Word, the Word was

86 G $\flat$  G $\flat$ /B $\flat$  C $\flat$  D $\flat$

first, was first.

90 *Bbm7 Cb Db Ebm7 Gb/Fb* 7

Ev' - ry - thing was cre - a - ted\_ through Him. Not hing, not one thing,  
 Not hing, not one thing,  
 Not hing, not one thing,

93 *Ebm7 Abm7*

not - hing, not one thing came in - to  
 not - hing, not one thing, came in - to  
 not - hing, not one thing, came in - to

*A tempo Back to pattern - tempo*

**L**

95 *Dbb11 Gb*

be - ing wit - hout Him.  
 be - ing wit - hout Him.  
 be - ing wit - hout Him.

97 *Gb/Bb Cb Db Gb*

The Word, The Word was first,  
 The Word, the Word was first.

8 101  $G\flat/B\flat$   $C\flat$   $D\flat$   $G\flat$  **rit.** . . . . .

The Word was first!

the Word was first.

was first.